



One Earth Solar Farm

Volume 6.0 Environmental Statement [EN010159]

Volume 3

Figure 11.1: Site Location and Study Area

Figure 11.2: Topography

Figure 11.3: Zone of Theoretical Visibility – combined substation and solar panels - bare earth

Figure 11.4: Zone of Theoretical Visibility – combined substation and solar panels with screening

Figure 11.5: Zone of Theoretical Visibility – substation with screening

Figure 11.6: Zone of Theoretical Visibility – solar panels with screening

Figure 11.7: Regional Landscape Character Areas

Figure 11.8: District Landscape Character Areas and Policy Zones

Figure 11.9: Local Village Character Areas

Figure 11.10: Representative Viewpoint Locations

Figure 11.11: Scoping Viewpoint Locations

Figure 11.12: Baseline photography

Figure 11.13: Winter Photomontages

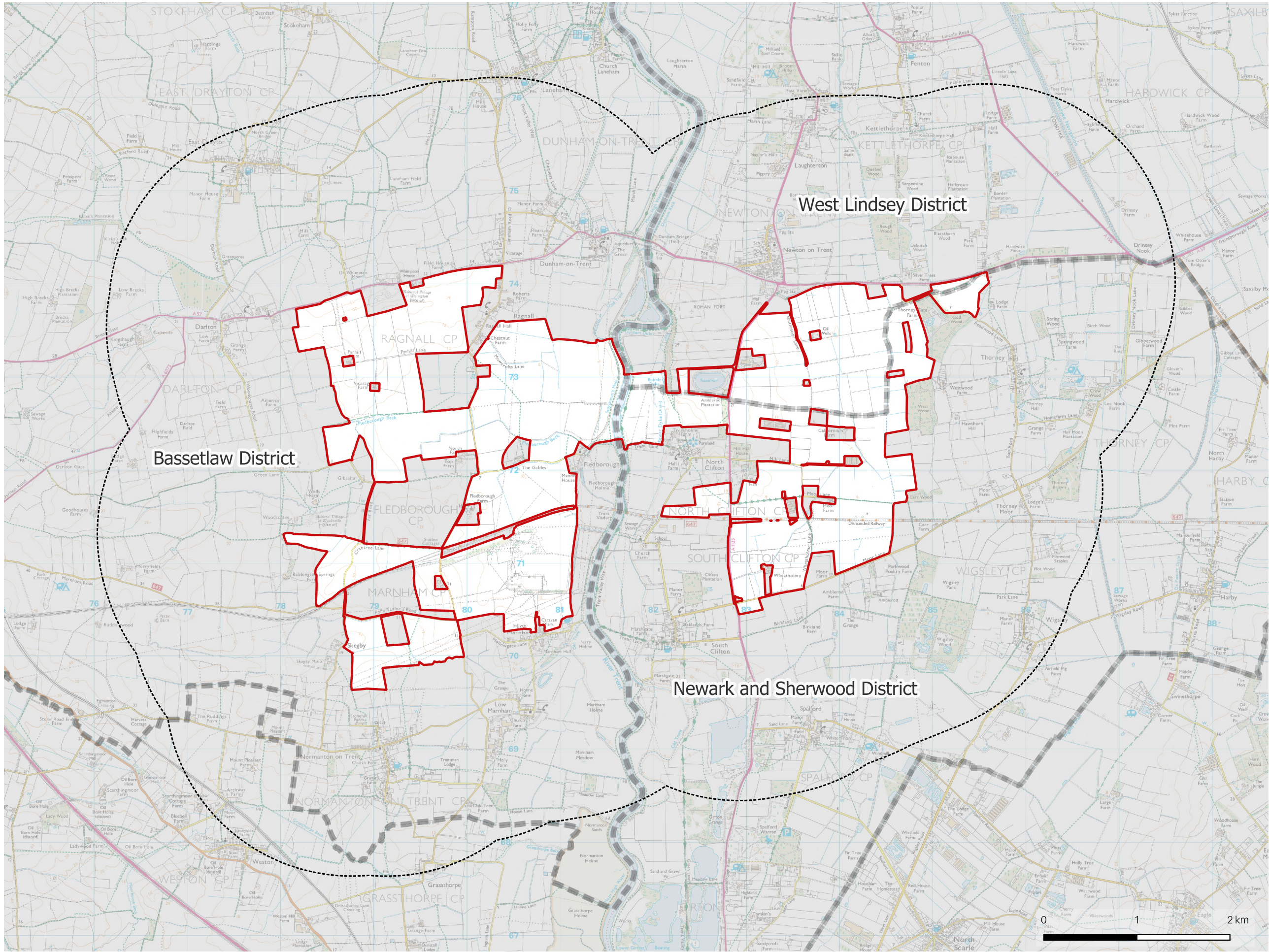
Figure 11.14: Summer Photomontages

February 2025

Document Reference: EN010159/APP/6.20

Revision 01

Infrastructure Planning (Applications: Prescribed Forms and Procedure) Regulations 2009
- Reg 5 (2) (a)

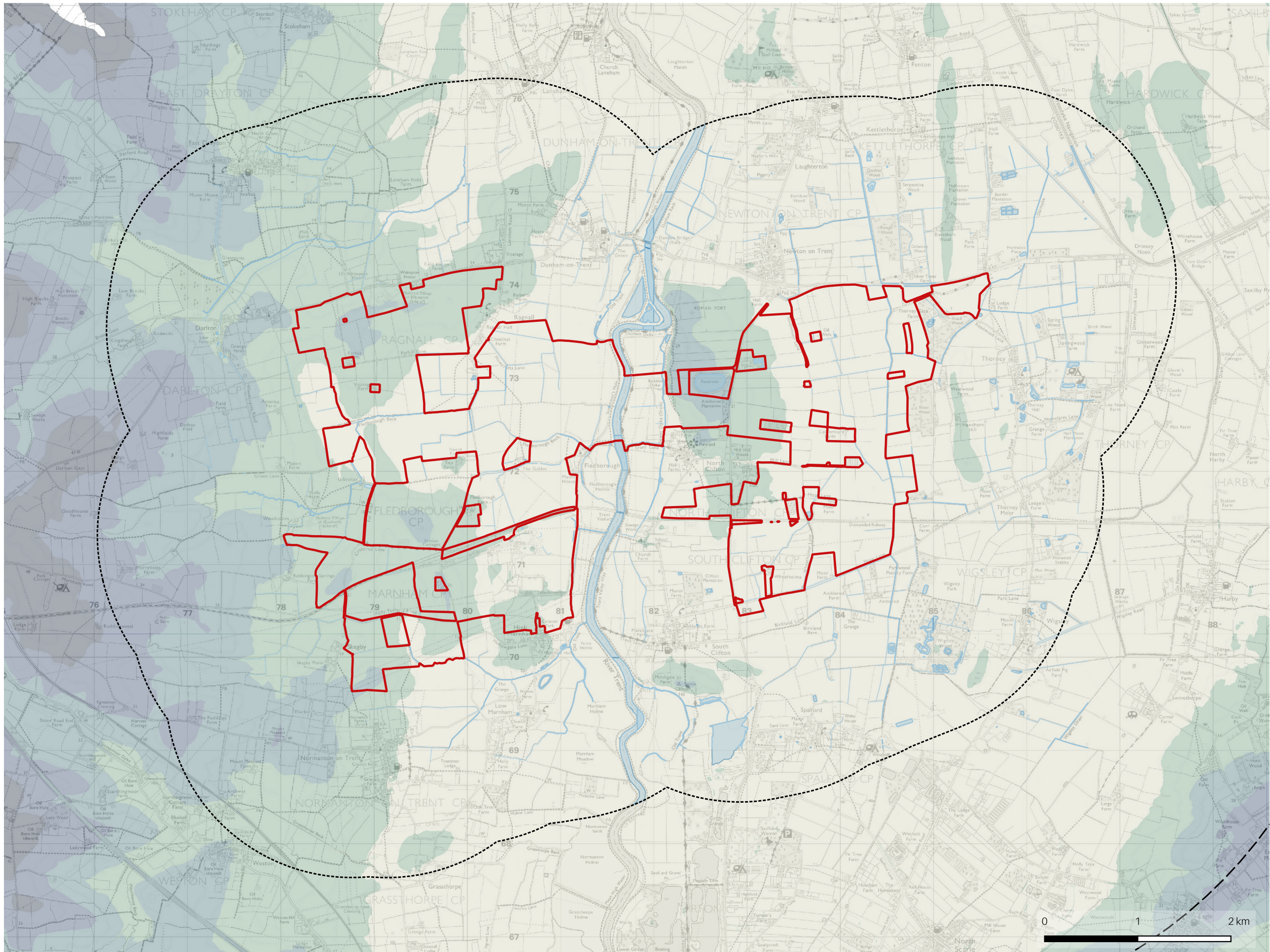


- Order Limits
- 2km LVIA Study Area
- District Boundary



Ordnance Survey © Crown Copyright 2025. All rights reserved. Licence number 100022432.

	PROJECT	One Earth Solar Farm	DRAWN BY	EJ	DRAWING NO.
	DRAWING TITLE	Order Limits Location and Study Area [EN010159/APP/6.20/11.1]	CHECKED BY	BG	11.1
	CLIENT	One Earth Solar Ltd.	DATE		REV
			January 2025		B



Order Limits

2km LVIA Study Area

Topography (Above Ordnance Datum)

<= 0 m

0 - 10m

10 - 20m

20 - 30m

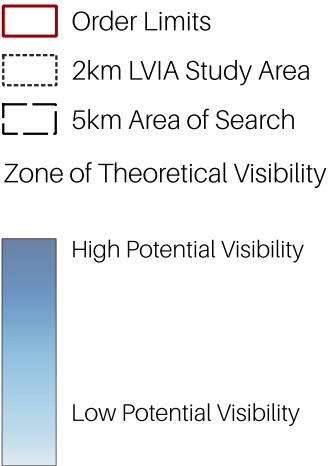
30 - 40m

40 - 50m

Ordnance Survey © Crown Copyright 2025. All rights reserved. Licence number 100022432. Contains public sector information licensed under the Open Government Licence v3.0.



PROJECT	One Earth Solar Farm	DRAWN BY	EJ	DRAWING NO.
DRAWING TITLE	Topography and Hydrology [EN010159/APP/6.20/11.2]	CHECKED BY	BG	11.2
CLIENT	One Earth Solar Ltd.	DATE	February 2025	REV
				A



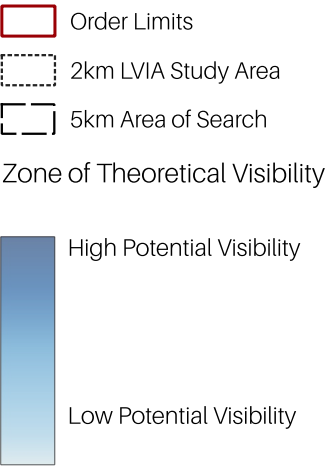
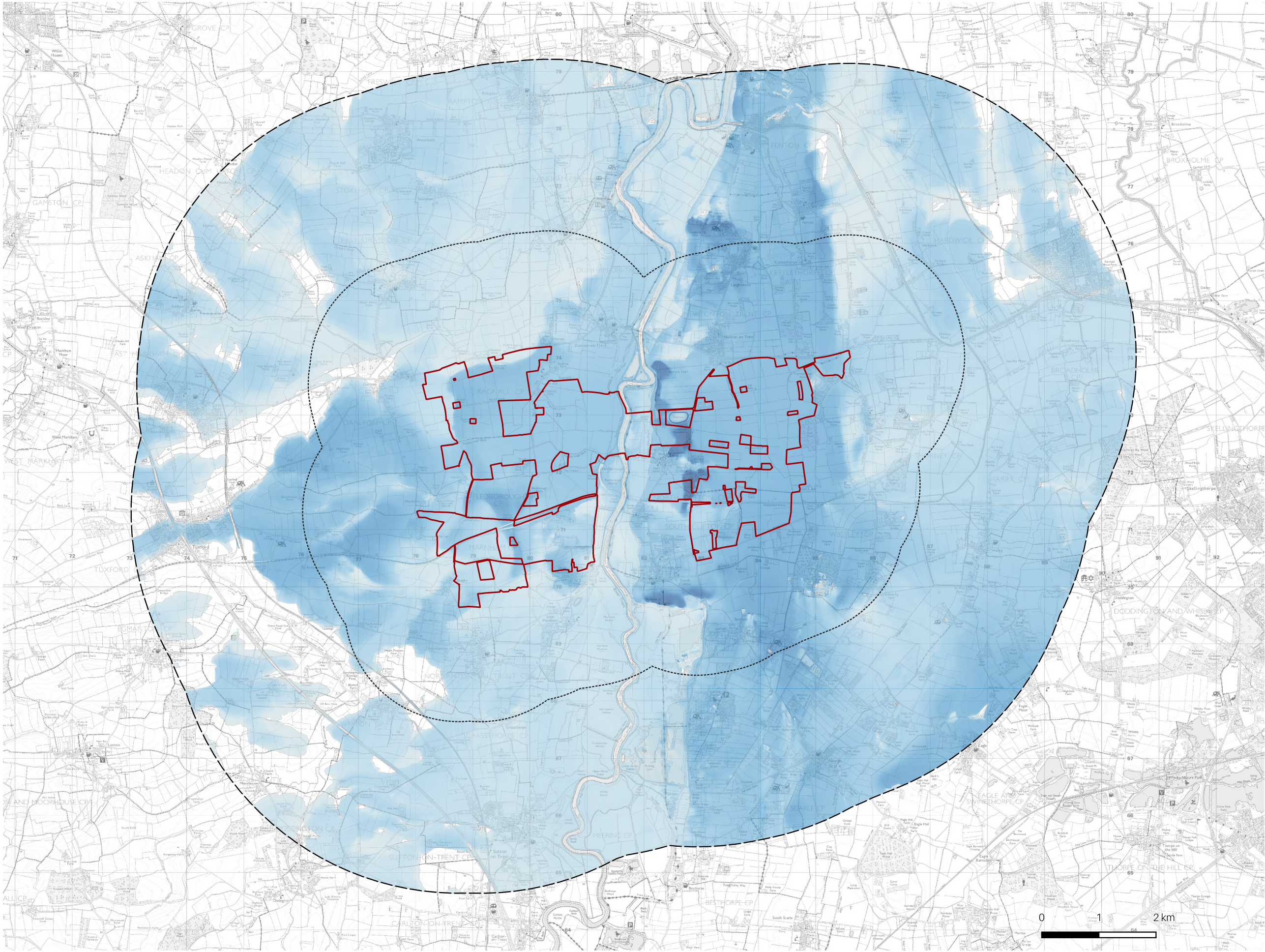
NOTES

The Zone of Theoretical Visibility (ZTV) has been generated using EA 2m Digital Terrain Model 2022. The ZTV has been generated based upon an observer eye level of 1.60m. It is based on 13.5m high points within the Proposed Substation Areas. All points are spaced out evenly on the 50 on 50m grid. All heights mentioned are above ground level (AGL).

Ordnance Survey © Crown Copyright 2025. All rights reserved. Licence number 100022432. Contains public sector information licensed under the Open Government Licence v3.0.



PROJECT	One Earth Solar Farm	DRAWN BY	EJ	DRAWING NO.
DRAWING TITLE	5km Zone of Theoretical Visibility - proposed substation without screening [EN010159/APP/6.20/11.3]	CHECKED BY	SG	11.3
CLIENT	One Earth Solar Ltd.	DATE	February 2025	REV
				B



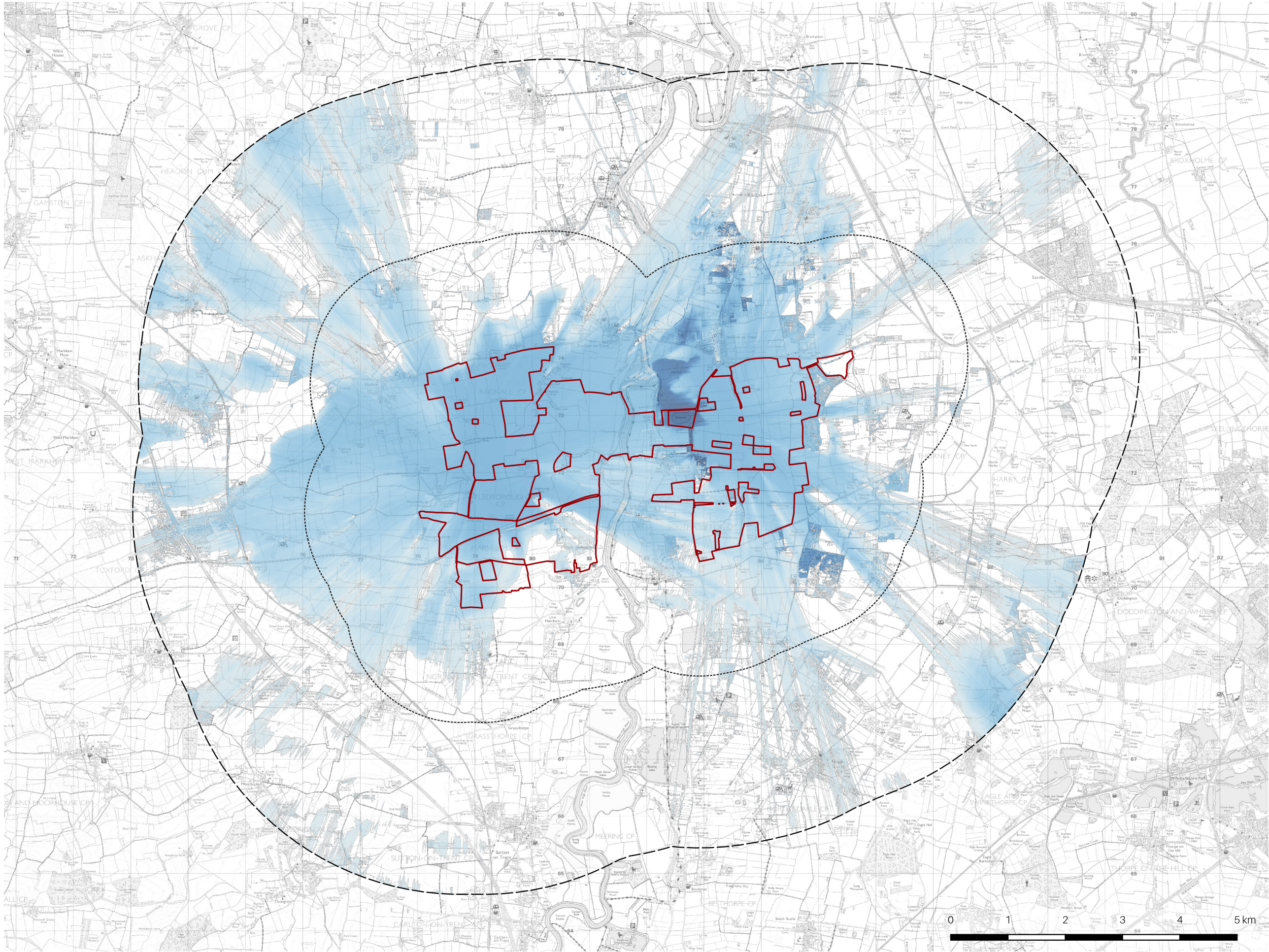
NOTES

The Zone of Theoretical Visibility (ZTV) has been generated using EA 2m Composite First Return Digital Terrain Model 2022. The ZTV has been generated based upon an observer eye level of 1.60m. It is based on 3.5m and 3.8m high points within the Proposed Development Areas. All points are spaced out evenly on the 50 on 50m grid. All heights mentioned are above ground level (AGL).

Ordnance Survey © Crown Copyright 2025. All rights reserved. Licence number 100022432. Contains public sector information licensed under the Open Government Licence v3.0.



PROJECT	One Earth Solar Farm	DRAWN BY	EJ	DRAWING NO.
DRAWING TITLE	5km Zone of Theoretical Visibility - proposed solar panels without screening [EN010159/APP/6.20/11.4]	CHECKED BY	SG	11.4
CLIENT	One Earth Solar Ltd.	DATE	February 2025	REV
				B



Order Limits

2km LVIA Study Area

5km Area of Search

Zone of Theoretical Visibility


High Potential Visibility

Low Potential Visibility

NOTES

The Zone of Theoretical Visibility (ZTV) has been generated using EA 2m Composite First Return Digital Surface Model 2022. The ZTV has been generated based upon an observer eye level of 1.60m. It is based on 13.5m high points within the Proposed Substation Areas. All points are spaced out evenly on the 50 on 50m grid. All heights mentioned are above ground level (AGL).

Ordnance Survey © Crown Copyright 2025. All rights reserved. Licence number 100022432. Contains public sector information licensed under the Open Government Licence v3.0.

	PROJECT	One Earth Solar Farm	DRAWN BY	EJ	DRAWING NO.
	DRAWING TITLE	5km Zone of Theoretical Visibility - proposed substation with screening [EN010159/APP/6.20/11.5]	CHECKED BY	SG	11.5
	CLIENT	One Earth Solar Ltd.	DATE	January 2025	REV B